



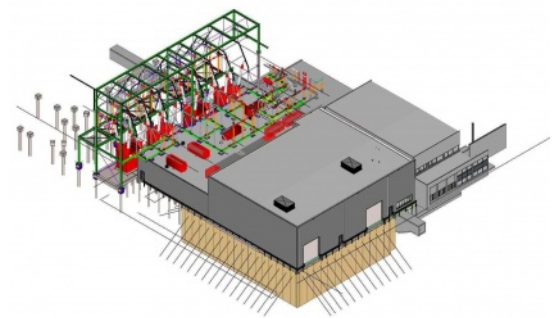
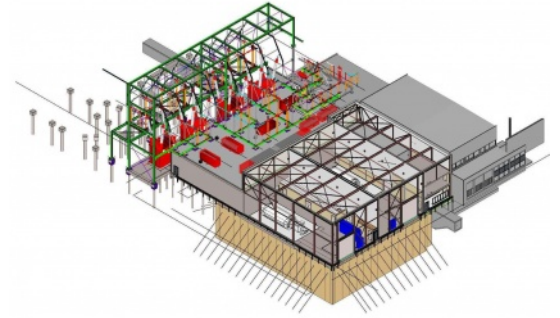
High Power laboratory extension DNV GL, Arnhem

Design & Construct of a short-circuit testing laboratory in Arnhem.

Global demand

In 2015 we were commissioned by DNV KEMA Netherlands to extend the capacity of the High Power Laboratory in Arnhem. The expansion has increased the current capacity by 50%. The building also contains the apparatus which is used to conduct the short-circuit testing. With this new extension DNV GL can meet the global demand for testing of even larger and heavier equipment.

We were responsible for the design and construction of a generator hall where two short-circuit generators were placed on foundation blocks with spring assemblies. The works were realised in an operational environment. In addition, the construction pit was realised by means of a CSM wall and a silicate injection treatment was used to stop groundwater ingress.



Facts and figures

Site

Arnhem

Status

Completed

Client

KEMA Nederland bv.

Contract

Design & Construct

Architect

Mies Architectuur

Learn more?

 info@visserensmitbouw.nl

 <https://www.visserensmitbouw.nl>

 +31 10 313 10 00